



Orchestrating a brighter world

NEC

Professional Installation Projectors

PX SERIES



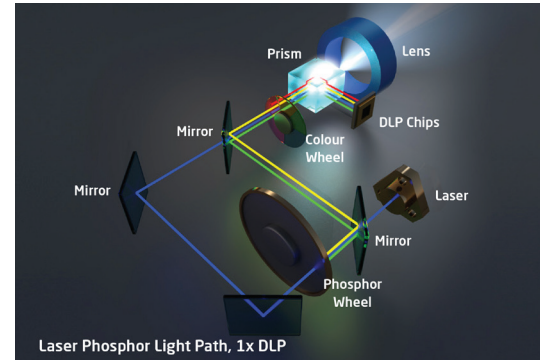
Powerful installation projectors with laser-phosphor light source supports new, demanding projection applications.

Laser Light Module

- 20,000-plus hours of virtually maintenance-free operation
- High-brightness, lower power consumption enhances applications such as retail, digital signage and theme parks
- Ability to control brightness creating a stable image over longer time periods
- Images appear immediately after power on due to instantaneous start up of the laser

Integrated and Powerful

- Project uncompressed FHD video with integrated HDBaseT
- High performance video processing/scaling creates life-like images
- Integrated software applications such as DisplayNote®, Crestron Roomview, AMX Beacon and PJ Link allow for complete interactivity and control
- Tile Matrix enables 4Kx2K resolution



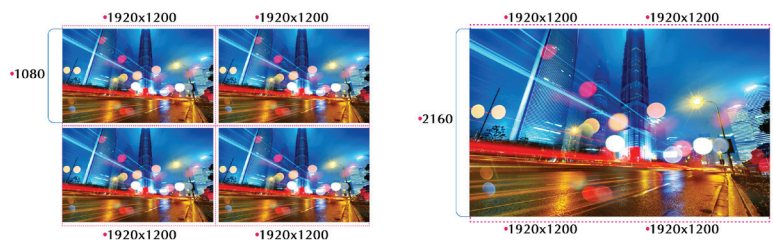
Flexible

- Enjoy greater installation flexibility with a complete line of powered optional bayonet style lenses (8) for quick and easy exchange. Lens throw distances range from 2.1 to 179.8 ft
- Tilt-free installation capabilities make these projector ideal for almost any install environment, including portrait orientation
- +/- 50% vertical lens shift and +/- 15% horizontal lens shift capabilities make alignment easy

Screen Splitter

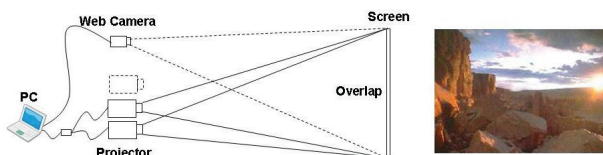
NEC is committed to bringing the latest and greatest innovation to projectors. Multi-display capabilities and TileMatrix technologies are integrated into the new PX series projectors. This processing is all done internally and therefore eliminates the additional hardware typically required to produce a beautiful 4K resolution image.

Screen Splitter (Multi Display) by Daisy Chain



Stacking correction

The industry's first built-in stacking correction capabilities (up to four projectors) allows the projectors to boost an image's brightness up to 40,000 lumens, which is ideal for larger-sized screens and environments with heavy ambient light. This feature also prevents the complete loss of an image, which can happen when using only one projector.



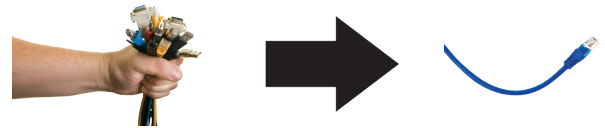
Edge blending

This function seamlessly blends multiple projected images to display a single high-resolution image.



Built-In HDBaseT Support

Simplify your installations with HDBaseT. Optimized for video applications and supporting uncompressed full HD digital video, audio, ethernet, power and various control signals. With only a single cable (up to 100m) to run, infrastructure and labor costs are reduced, installations are significantly easier, and there is no cable clutter to manage. With uncompressed HD video support, images have never been more stunning. What's more, control signals are contained in the same cable.



Remote control

Wired and wireless backlit remote allows you to adjust for complete control of the projectors menu structure in a well lit or dark environment. Direct controls such as lamp mode, aspect ratio, volume and input selection eliminates multiple button pushes.



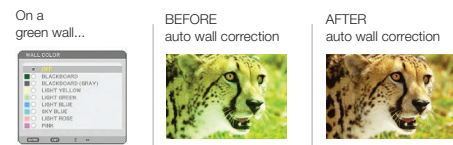
DisplayPort

This input provides PX Series models with expanded connectivity with advanced technology.



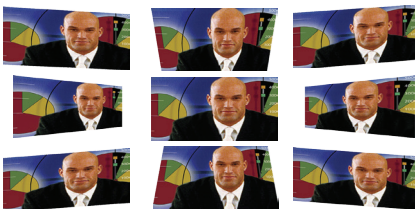
Wall color correction presets

These provide for adaptive color tone correction to display properly on non-white surfaces.



Cornerstone

Enhanced keystone correction allows for horizontal, vertical and diagonal image correction for aligned images even when the projector is set up at an angle to the screen.



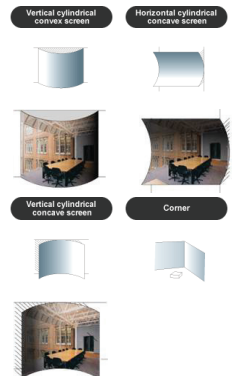
3D

When combined with active shutter glasses and 3D emitter, the PX Series Projectors create 3D images from a computer or Blu-ray player. The PX Series utilize the 3D sync line output from the projector to connect to the 3D emitter. Optional 3D glasses and emitters from XPAND are available from NEC.



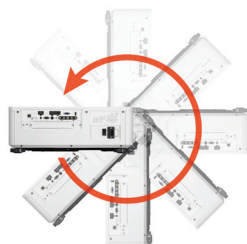
Geometric Correction

Projecting an image isn't confined to a standard flat screen or wall with the NEC PX Series. Geometric correction allows these models to project an image on spheres, cylinders, corner angles and many more non-standard surfaces.



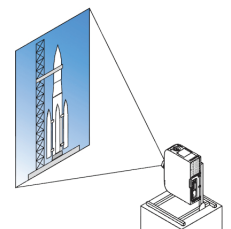
Tilt-free

The projector can be rotated freely (360°) to orient the image depending on the installation requirements



Portrait mode

Allows the projector to be rotated (and screen if necessary) to a vertical alignment so that portrait content can be viewed without black bars on the side when landscape mode is used.



UNIQUE FEATURES

3D Reform™ allows you to square the image by adjusting horizontally, vertically or diagonally when the projector cannot be placed parallel or perpendicular to the screen

Advanced AccuBlend™ ensures detailed images when non-native resolution sources are connected to the projector

AutoSense™ automatically syncs with any computer signal and features one-touch image optimization

64-step image magnification with location control

Discreet source keys for source selection

Remote diagnostics enable the user to monitor and make adjustments to the projector remotely

Built-in HTTP page for control and monitoring over a LAN network. Email notification of error messages or lamp end-of-life can be sent to remote locations.

WARRANTY

Registered owners receive a five (5) years or 20,000 hours (whichever comes first) parts and labor warranty, including the first year of InstaCare. InstaCare provides the original owner one year of either limited 3 business day repair/return or next business day exchange.

IN THE BOX

Remote control, batteries, power cord, user's manual on CD-ROM, quick start guide, product registration card.

ACCESSORIES

- NC1100CM** Ceiling mount
- RMT-PJ35** Replacement remote control
- NP01PW1** Power cable
- RGBCBL-PJPX** RGB cable
- Optional Lenses** NP16FL, NP17ZL, NP18ZL, NP19ZL, NP20ZL, NP21ZL, NP31ZL, NP39ML
- SB-01HC** HD/SS-SDI input card
- SB-04HC** 3G/HD/SD-SDI input Card
- SB-06WC** WiDi / Miracast Media-Player
- XPAND X105-RF-1** 3D Glasses
- XPAND AD025-RF-X1** RF Emitter
- N8000-8830** NEC OPS PC with Intel Core i5, 320GB Hard Drive, Windows Embedded Standard 7
- N8000-8822** NEC OPS PC with Intel Celeron, 320GB Hard Drive, Windows Embedded Standard 7
- ADVEXON1-I** Extends term of InstaCare service program to 2 years
- ADVEXON2-I** Extends term of InstaCare service program to 3 years

ORDERING MODEL NUMBERS

- NP-PX803UL-BK
- NP-PX803UL-WH
- NP-PX1004UL-BK
- NP-PX1004UL-WH

| | | PX803UL | PX1004UL |
|----------------------------------|--|---|---|
| Display Technology | | 0.67" DMD | |
| Light Output (lumens) | | 8000 normal / Eco = variable | 10,000 normal / Eco = variable |
| Resolution | Native | WUXGA 1920 x 1200 | |
| | Maximum | 4K 4096 x 2160 | |
| Contrast Ratio (up to) | | 10,000:1 with dynamic contrast | |
| Lamp Life (up to) | | 20,000 hours | |
| Screen Size (diagonal) | | 30 to 350 in. / 0.76 to 8.89m | |
| Throw Ratio | NP39ML | 0.38:1 | |
| | NP31ZL | 0.75 - 0.93:1 | |
| | NP16FL | 0.76:1 | |
| | NP17ZL | 1.25 - 1.79:1 | |
| | NP18ZL | 1.73 - 2.27:1 | |
| | NP19ZL | 2.22 - 3.67:1 | |
| | NP20ZL | 3.58 - 5.38:1 | |
| Projection Distance | | 2.1 to 179.8 ft. / 0.64 to 54.8m | |
| Projection Angle | | 2.1 to 19.1° tele / 3.3 to 24.0° wide | |
| Lens | Zoom | Powered | |
| | Zoom Ratio | Variable | |
| | Focus | Powered | |
| | NP39ML | F=2.0, f=5.64mm, 6.0 lbs. (2.7 kg) | |
| | NP31ZL | F=1.96 to 2.3, f=11.3 to 14.1mm, 3.3 lbs. (1.5 kg) | |
| | NP16FL | F=1.85, f=11.6mm, 2.0 lbs. (0.9 kg) | |
| | NP17ZL | F=1.85 to 2.5, f=18.7 to 26.5mm, 2.4 lbs. (1.1 kg) | |
| | NP18ZL | F=1.64 to 1.86, f=25.7 to 33.7mm, 1.9 lbs. (0.84 kg) | |
| | NP19ZL | F=1.86 to 2.48, f=32.9 to 54.2mm, 2.2 lbs. (1.0 kg) | |
| | NP20ZL | F=1.85 to 2.4, f=52.8 to 79.1mm, 2.2 lbs. (1.0 kg) | |
| | NP21ZL | F=1.85 to 2.48, f=78.5 to 121.9mm, 3.1 lbs. (1.4 kg) | |
| Shift | | Powered +0.59 vertical, +/-28 horizontal | |
| Keystone Correction | | +/- 40° horizontal, +/- 40° vertical | |
| Synchronization Range | Horizontal | Analog: 15-100kHz, Digital: 15-153kHz | |
| | Vertical | Analog: 48-120Hz, Digital: 24-120Hz | |
| Supported Video Standards | | NTSC, NTSC4.43, PAL, PAL-60, PAL-M, PAL-N, SECAM | |
| SD/HD Video Signal Compatibility | | 1080p, 1080i, 720p, 576p, 576i, 480p, 480i | |
| PC Signal Compatibility | | VGA, SVGA, XGA, SXGA, SXGA+, UXGA, WUXGA | |
| Macintosh Compatibility | | Yes | |
| Input/Output Terminals | RGB1 (analog) | VGA 15 pin D-sub, Component video using ADP-CV1E adapter | |
| | RGB2 (analog) | 5-BNC | |
| | RGB3 (digital) | HDMI (V1.4) w/HDCP | |
| | RGB4 (digital) | DisplayPort w/HDCP | |
| | RGB5 (digital) | HDBaseT | |
| | Option Slot | OPS | |
| | Monitor Out | HDMI (V1.4) w/HDCP | |
| 3D Sync Line | | 3Pin D | |
| External Control | | RS-232, IR, HDBaseT, Stereo Mini , RJ-45 | |
| Sync Compatibility | | Separate Sync / Composite Sync / Sync on G | |
| Power Requirements | | 100 - 240V AC, 50/60Hz | |
| Input Current | | 4.6A - 9.4A | 5.2A - 11.6A |
| Power Consumption | (ECO off/ECO Mode/ Standby/Standby-Power Saving) | 874W/695W/4.3W/0.18W | 1220W/980W/4.3W/0.18W |
| Installation Orientation | | Floor/Front, Floor/Rear, Ceiling/Front, Ceiling/Rear | |
| Dimensions (WxDxH) | | 19.7 x 22.8 x 8.5 in. / 500 x 583 x 216mm | |
| Net Weight | | 61.7 lbs. / 28.0 kg | |
| Fan Noise | | 40 dB normal / 35 dB eco | 42 dB normal / 37 dB eco |
| Regulations | | USA: UL(UL60950-1, Laser + Lamp (IEC60825-1 + IEC62471), FCC Part15 Class A Canada: CUL(UL60950-1, Laser + Lamp (IEC60825-1 + IEC62471), ICES-003 Class A | USA: UL(UL60950-1, Laser + Lamp (IEC60825-1 + IEC62471), FCC Part15 Class A Canada: CUL(UL60950-1, Laser + Lamp (IEC60825-1 + IEC62471), ICES-003 Class A |
| Operating Temperature | | -14° - 122°F / -10° - 50°C | |
| Humidity | | 20-80% non-condensing | |
| Storage | | -14° - 122°F / -10° - 50°C | |

* Lens does not ship with the projector. Additional accessories are available, including screens, carts, mount accessories and replacement cables. Visit www.necdisplay.com for details.



3D Reform, Advanced AccuBlend, AutoSense and ECO Mode are trademarks of NEC Display Solutions. HDMI, the HDMI Logo and High-Definition Multimedia Interface are trademarks or registered trademarks of HDMI Licensing LLC. All other brand or product names are trademarks or registered trademarks of their respective holders. Product specifications subject to change.