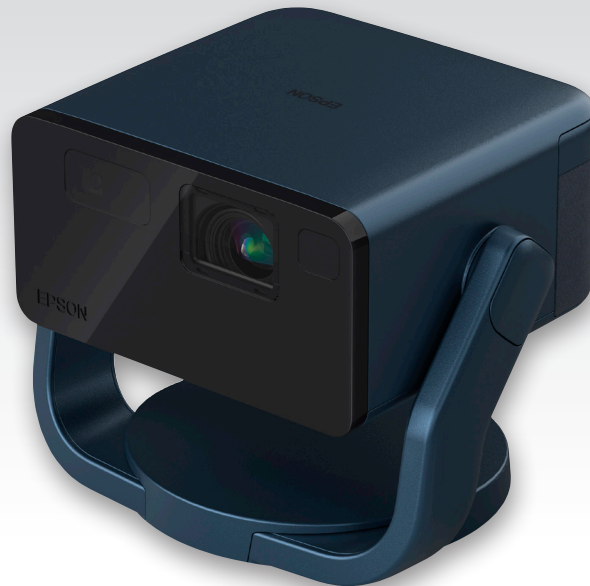


Epson EpiqVision® Mini EF22

Portable Smart Laser Projector



Make Every Event Epic.

Big Screen Entertainment — Make every event truly epic by watching your favorite content on an immersive picture up to 150"

Outstanding Picture Brightness — 3-chip 3LCD produces 1,000 lumens of color brightness (IDMS Rated) and 1,000 lumens of white brightness (ISO Rated)⁵ for day or night

Stunning Picture Quality — True laser-array projection technology produces a sharp Full HD picture with stunning HDR color

Portable Design — Elegant 360-degree swivel-stand with tilt ability allows you to project content nearly anywhere

Simple Setup — EpiqSense™ technology² for real-time picture resize, focus and alignment on virtually any surface

Laser Light Source — Virtually maintenance-free 20,000-hour laser light source³ with no lamps to replace—ever

Google TV™⁴ — With access to over 10,000 apps⁵, including favorites like Netflix® and Disney+

Impactful Audio — High-quality internal stereo speakers with Dolby® audio for an impressive audio performance

Built-In HDMI® — Easily connect gaming consoles and streaming devices like Apple TV®, Roku® or Amazon Fire™ TV

World-Class Support — 2-year limited warranty with full-unit replacement



Specifications

Projection System Epson 3LCD Laser
Chip Design (Architecture) 3-Chip
Projection Method Front/Rear/Upside Down
Driving Method Poly-silicon TFT Active Matrix, 0.62"
Color Brightness¹ 1,000 lumens (IDMS Rated)
White Brightness¹ 1,000 lumens (ISO Rated)
Aspect Ratio 16:9
Native Resolution 1920 x 1080
HDR Support⁶ HDR10/ HLG
Color Reproduction Full-color (up to 16.77 million colors)
Color Processing Full 8 bit
Light Source Type Laser Diode
Light Source Life³ 20,000 hours (normal/quiet mode)
Built-In Speakers Two 5 W stereo
Image Size 30" – 150" (zoom: wide)
Quick Corner Yes
Projection Orientation 360° pan, 150° tilt
Throw Distance 25" – 133"

Projector Lens

Type zoom/focus (auto)
Zoom Ratio 1.0-1.82 (Digital Zoom)
F-Number 2.0
Focal Length 13.9 mm
Throw Ratio (16:9) 1.0-1.81

Auto Image Adjustment

Following features are available for Screen Size 30" – 100" or Throw Distance 25" – 88"
 Keystone Correction & Obstacle Avoidance Auto
 Horizontal Angle ±20 degrees
 Vertical Angle ±20 degrees
 Roll Angle ±10 degrees
 Obstacle Avoidance Range ≤1/1.35 outside of projection range
 Screen Fit Yes
 Screen Size 30" to 100"
 Focus Digital Auto/Manual

Other Features

Color Modes Dynamic, Vivid, Natural, Cinema, Custom
Smart Eye Protection Yes, disabled during keystone correction
Input Signal 1x HDMI® (HDCP 2.3)
 ARC: LPCM 2ch (Max 48kHz/24bit)
 Dolby: Dolby Digital (AC-3) & Dolby Digital Plus
Audio Output Signal 1x Stereo Mini
Operating Temperature 41 °F to 95 °F (5 °C to 35 °C)
Power Supply Voltage 100 V – 240 V AC ±10%, 50/60 Hz
Power Consumption
 Eco Mode: 75W
 Normal Mode: 105W
Fan Noise 18 – 22 dB
USB Type-A 1x (for USB Mass storage device, Mic, HID, Web camera)
USB Type-B 1x mini (for service)
Security Padlock & Security Cable Hole
Tripod Screw Hole Yes
Country of Origin Philippines

Dimensions (W x D x H)

Including Stand 9.3" x 7.5" x 7.5"
Weight 6.6 lb

Remote Control

Features Front directional
Operating Distance 16.4 ft (5 m)
Operating Angle
 Right/Left: -30 to +30 degrees,
 Upper/Lower: +15 to -15 degrees

Built-In Google TV™⁴

Wireless Wi-Fi-s 2.4 GHz and 5 GHz
 IEEE 802.11 a, b, g, n, ac
 Bluetooth® 5.1 Class 1
 Video resolution up to 1920 x 1080 @60 fps 4:4:4 color

Eco Features

RoHS compliant
 End-of-life options available⁷
 Epson America, Inc. is a SmartWay® Transport Partner⁸

Support

Epson ConnectionSM
 Pre-Sales Support (U.S. and Canada): 800-463-7766
Website: www.epson.com
Service Programs 2-year projector limited warranty,
 Private Line® dedicated toll-free support (U.S. and Canada only)

What's in the Box

EF22 projector, power supply, power cable, 1x remote control,
 2x AAA batteries, Quick Setup Guide

Ordering Information

EF-22N Projector Stone Blue	V11HB38420
EF-22G Projector Opal Green	V11HB38320
EF-22R Projector Quartz Rose	V11HB38220
EF-22B Projector Onyx Black	V11HB38120
EF-22W Projector Diamond White	V11HB38020
Mount Plate ELPMB65	V12HA40AA0
Safety Wire	V12H003W01
Carry Case	EF22EF21BAGB
1-Year Extended Service Plan	EPPSNVHTRE1

¹ Color brightness (color light output) and white brightness (white light output) will vary depending on usage conditions. Color light output measured in accordance with IDMS 15.4; white light output measured in accordance with ISO 21118. | ² Available for images 30" to 100". | ³ No required maintenance for the light source for up to 20,000 hours. Approximate time until brightness decreases 50% from first usage. Measured by acceleration test assuming use of 0.04 – 0.20 mg/m³ of particulate matter. Time varies depending on usage conditions and environment. Replacement of parts other than the light source may be required in a shorter period. | ⁴ To access Google TV and its features, a Google account and an Internet connection of 5 Mbps or faster for HD or 25 Mbps or faster for 4K is required. Third party app compatibility subject to change without notice. | ⁵ Some apps and/or content may not be available in your region. | ⁶ HDR performance available with select third-party devices. For more information, see www.epson.com/hdrcompatibility | ⁷ For convenient and reasonable recycling options, visit www.epson.com/recycle | ⁸ SmartWay is an innovative partnership of the U.S. Environmental Protection Agency that reduces greenhouse gases and other air pollutants and improves fuel efficiency.



Epson America, Inc.
 3131 Katella Ave., Los Alamitos, CA 90720

Epson Canada Limited
 185 Renfrew Drive, Markham, Ontario L3R 6G3

www.epson.com
 www.epson.ca

Contact:

Specifications and terms are subject to change without notice. EPSON, Epson EpiqVision and the 3LCD logo are registered trademarks of Seiko Epson Corporation. EpiqSense is a trademark of Epson America, Inc. Private Line is a registered trademark and Epson Connection is a trademark of Epson America, Inc. Apple TV is a trademark of Apple Inc., registered in the U.S. and other countries. Google is a registered trademark and Google TV and YouTube TV are trademarks of Google LLC. SmartWay a registered trademark of the U.S. Environmental Protection Agency. Wi-Fi® is a registered trademark of Wi-Fi Alliance®. All other product and brand names are trademarks and/or registered trademarks of their respective companies. Epson disclaims any and all rights in these marks. Copyright 2024 Epson America, Inc. CPD-64585R3 9/24